

THREE VIEWS NEWS

CIRCULATION 1310

SEPTEMBER 2021

No. 157



YOUR LOCAL NEWSLETTER

Parish Community Leisure Centre - Oakthorpe

The Parish Council decided at the May AGM to restructure the meeting timetable, which meant no full Council meeting in August. We will now meet in December, however in the meantime we have some news that we wish to share.

The report this month focuses on the Parish Community Leisure Centre.

Following the Community Leisure Centre questionnaire being circulated earlier this year, we received a total of 120 responses from 1,250 households, and we thank everyone for their contribution. We endeavoured to make it as accessible as possible, having both an electronic version of the survey and paper copies that could be delivered at local drop off points. Thank you to the Halfway House, the Village Store and Caroline Hart.

Responses by village:

<i>Oakthorpe</i>	<i>31</i>
<i>Donisthorpe</i>	<i>81</i>
<i>Acresford</i>	<i>8</i>

There were mixed views on the Centre at Oakthorpe. Ideas for usage and queries regarding usage within the Parish were also raised and most responses indicated that the Centre should remain within the Parish.

It was identified that doing this would mean further investment and Council feels the precept would be more beneficial if focused on improvements that cross the whole Parish and it is hard to justify the amount of precept we believe is needed to continue supporting the Centre.

The Council has taken advice and spoken to a number of organisations and is currently in discussions with a Community Interest Company that seeks to expand and create small local community satellite centres. The Council would retain ownership of the building as a Parish asset.

The company ME Sports would take over operational responsibility of the centre, honouring existing user groups and offering increased sport, holiday club activities, school PE activities and alternative education provision, as well as working alongside interested groups. This will add to the range of activities currently on offer and hopefully appeal to more people in the Parish, whilst releasing the Council from financial responsibilities that will allow us to invest more widely across the Parish.

If you have any queries, please do not hesitate to contact us using the contact details opposite.

ODA Parish Council

Please remember, Council did not meet in August.

The next full open Council meeting is planned for
8th September, 7pm at OCLC,
subject to further guidance on restrictions.

Parish Memorial Gardens



Following our article in July's edition, we're now pleased to say that work has started in earnest on this project. On page 7 you will see a copy of the first draft proposal that has been produced by Mark Stefan from Design with Nature. He has some really creative ideas and is combining them with some of our own ideas to produce some great designs. We are very excited about the other proposals he will be producing in the coming weeks.

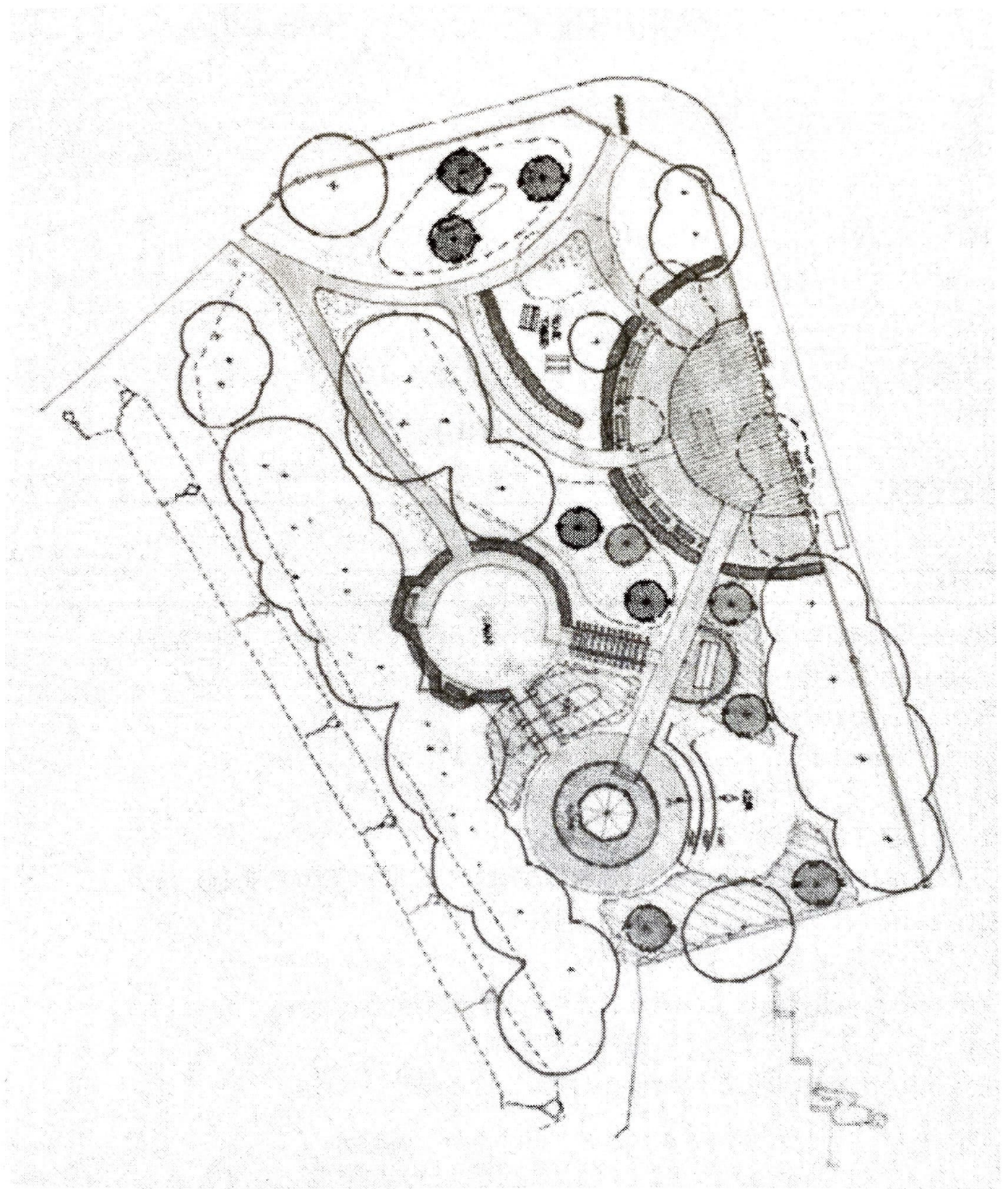
We need as many views as possible on the proposals so that we can amend them if necessary and then decide which is the most popular design to be used. To give as many people as possible the chance to come along, see the plans and talk to us, we will be holding an open day in each village in mid-September. Oakthorpe's will be at the Leisure Centre on Saturday 11th September. Donisthorpe's will be in the church on Saturday 18th September, and Acresford's will be in the chapel on Sunday 19th September. Full details will be posted as soon as we have finalised the arrangements.

Remember, this is the easy part. If you really want to see the gardens improved and accessible, we will need your support with tidying up the gardens as they are, publicising the project and raising the funds to pay for the work to be done.

If you would like to get involved, please contact Jamie Wilde at wilde917@outlook.com

Jamie Wilde

Parish Memorial Gardens



Draft proposal by Mark Stefan from Design with Nature.

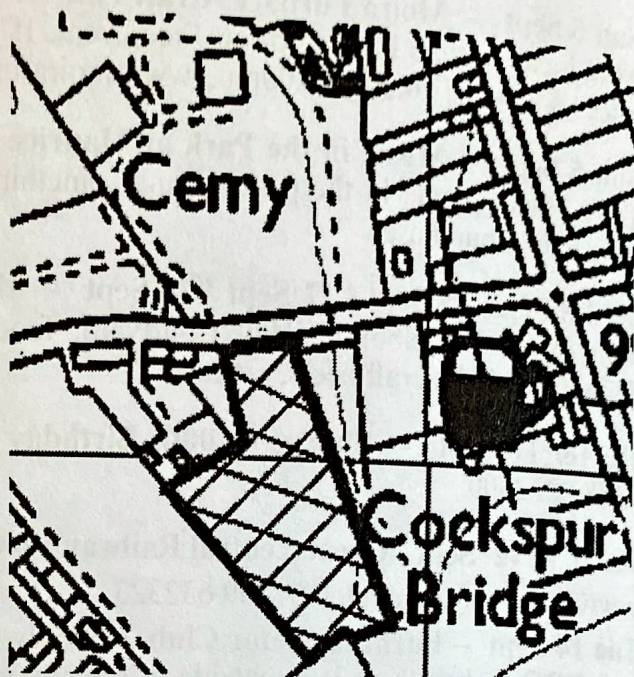
Do you know who owns this land between :
27 Church Street & Ashlar Drive, Donisthorpe, DE12 7PX ?

Can you, or anyone you know, prove who owns the land shown in the picture ?

Extensive searches, including Land Registry and contact with CISWO, have not found any information regarding the owner or registration of this land.

It is hoped to make this land a community space for the villagers of Donisthorpe.

If you can help with any information to support our search, please phone: **07951 587618**. If nothing is heard by 28 September 2021, steps will be taken to start this acquisition.



Airports

SMART CARS TAXIS
DONISTHORPE

Local

EMAIL

Facebook

Facebook page