

THREE VIEWS NEWS

CIRCULATION 1330

DECEMBER / JANUARY 2022

No. 160



THE NATIONAL FOREST

OAKTHORPE



THE NATIONAL FOREST

DONISTHORPE



THE NATIONAL FOREST

ACRESFORD

YOUR LOCAL NEWSLETTER

Parish Council Report

Time speeds by and it falls upon me to write the final report of the year. Life is becoming more settled but do not forget COVID will be with us for a long time yet. We have to learn to live with it, but if we all continue to be careful things can only get better. Please continue to take reasonable precautions to keep yourselves and others safe.



Meetings at the moment are fairly intense, there seems to be so much going on locally and nationally. You can find all minutes online or on the notice board and if you need further information the Clerk will point you in the right direction. Even better, you could attend the Parish Council and committee meetings in person. We would appreciate more members of the public showing an interest, you may even decide to become more closely involved?

Volunteers in the Parish have been really active recently and we would like to say a special thank you to Donisthorpe Community Group for their recent bulb planting, litter picking and the placing of soldiers and the poppy 'waterfall' commemorating Armistice Day 2021. Also, many thanks to Cllr. Robert Ashman for putting the poppies up throughout the Parish. Thanks too go out to the volunteers in Oakthorpe for their regular litter picking and help with bulb planting and the 'unknown' person in Acresford who has supplied extra poppies. Last, but by no means least, a big thank you to all involved in producing and distributing '3 Views News', looked forward to by many parishioners each month for local information and interesting snippets of news.

Council specifically asked me to thank Mick Warren for the maintenance work, tidying etc. he has done around the Parish in the absence of a regular handyman. As a member of the council he cannot receive remuneration for this work (but I know that a thank you is quite adequate).

The Council are trying to get up to date on issues that have fallen by the wayside and have recently had a full tree survey carried out of all trees in the Parish. This will not only cut down on any large costs in future but also addresses any Health & Safety issues that could arise. As this had not been addressed properly before, we were quite apprehensive of the results, however only two trees were identified as needing urgent attention and these will be treated and monitored. We now intend to address this regularly ourselves, so we are sure you will agree this initiative was worth the expense. You can read the whole of this report on our website.

On 14th November, the Parish gathered at St John's Church in Donisthorpe to commemorate the past sacrifice of so many. This was followed by a procession to the Memorial Gates where a short service and the laying of wreaths took place.

The Parish Council would like to thank everyone involved in the planning and organisation of the event. It was heartwarming to see so many members of the Parish come together for such an important and personal service.

(Continues on Page 5)

After receiving a plea from the Citizens Advice Bureau for help towards funding, the Council voted to donate £100 from the appropriate 'pot' towards this. The CAB do a sterling job and we feel that this winter they will be overwhelmed with people who are finding life difficult.

Final point to mention, our refuse collection day has changed. I hope this does not take too long to get used to. When I looked round our street, only one person seemed to have forgotten, so pretty good I thought.

What I would like to say, having spoken recently to the person in charge, is please re-read the council information and keep up to date on what you put in your recycling, and in what condition. Council have a 'percentage' for 'foreign objects' in the recycling groups (e.g. food left in unwashed containers, brown paper in the wrong bag etc.) but once this is exceeded, the whole batch goes in landfill! We may think we are helping the environment, but are we really?

All that remains to be said is, on behalf of ODAPC, keep on taking care and remain safe. We hope you have an AMAZING Christmas and that 2022 proves a better year for everyone.

Cllr. Debbie Warren

The next open Council meetings will take place at Oakthorpe Leisure Centre on
Monday 8th December and Monday 12th January at 7.30pm
(subject to further guidance on restrictions).

Pesto Swirls

Easy nibbles for Christmas – makes 12.

Ingredients:

1 x packet of puff pastry
1 tablespoon of garlic seasoning
25g / 1 oz of parmesan cheese, grated

1 tablespoon of dried basil
2 tablespoons of tomato purée
1 tablespoon of olive oil.

Preheat oven to 220°C, 425F/ gas mark 7. Roll the pastry out on a lightly floured surface – 10 x 8 inches.

In a bowl, mix together the remaining ingredients, adding 2 tablespoons of water to soften the paste. Spread the paste over half the pastry and fold the other half on top of the pasted side. Roll the pastry lengthways to form a long sausage shape.

Cut the pastry into 12 pieces and roll up. Arrange the rolls, well spaced apart, on a baking sheet and bake for about 12 minutes.

Enjoy!

Pat Tully



Wassailing the Community Orchard

Covid regulations permitting, the thirteenth annual Donisthorpe Wassail will take place on Saturday, 15th January 2022 in the Community Orchard.



The origins of Wassailing probably pre-date the Christian church, with remnants of the tradition being found all over the country, and not just in the modern apple-growing areas of the West Country. The intention of the Wassailers is to scare off the evil spirits which have settled in the orchard over the previous twelve months, and wake the trees, in the hope of producing a good apple crop. It certainly seems to have worked this year!



We meet at the Halfway House at 6.30pm on the Saturday evening, and process down Hall Lane at about 7.00pm. As we enter the Orchard, we make a suitable racket to wake the spirits up.

Once we are in the Orchard, we hold a ceremony around the "King" tree, to call for the blessing of the good spirits on the trees, and sing the Donisthorpe Wassail Song as mulled cider made from the last apple harvest is passed around. To prevent the possible spread of infection, please bring a small receptacle out of which to drink the cider.

Please bring a torch (it will be dark!), and something with which to make a noise – a saucepan lid and wooden spoon, or something to blow is ideal!

After the ceremony, we return to the Halfway House, for a buffet and an evening of music and song.

Everyone is welcome to join us for the Wassail, and to make it a real village merry-making!

Ted Tann-Watson

"Hatfuls, capfuls, three bushel bags full
And a little heap under the stairs!"

Traditional Wassail Song.

NWLDC response to Government's Integrated Rail Plan

The Government has today now published its Integrated Rail Plan (IRP) for the North and the Midlands.

The plan states that:

- A high-speed line will be built between Birmingham and the East Midlands;
- HS2 trains will go direct to Nottingham, Derby and Sheffield;
- The Midland Mainline through Leicester and Leicestershire, and on to Derby, Nottingham and Sheffield will be electrified, taking more diesel engines off the system.

In an initial response to the plan, Councillor Robert Ashman, Deputy Leader and Portfolio Holder for Infrastructure at North West Leicestershire District Council, said:

"After much speculation, we are pleased to have a final decision on the future of HS2 through our district as this gives certainty to our residents and businesses. As we get to grips with the detail of the plan, it's important that we continue to support our communities that are impacted by the new railway and help them plan for the future.

"We have engaged positively with HS2 throughout the early processes and will continue with this approach. This active work makes sure our voice is heard and we can more successfully promote the businesses, jobs, and natural and historic assets that make North West Leicestershire what it is, whilst accepting modernisation of the national rail network with the necessary mitigation to minimise its impact.

"It's fair to say that North West Leicestershire isn't well served by rail, and I can understand residents opposing HS2, with its station outside of our district. We're hopeful that the other elements of the rail plan, particularly the electrification of the Midland Main Line will improve rail connectivity across the midlands and be beneficial to us both economically and in terms of our zero carbon goals."



Measham Library

Please note our new
opening hours opposite.

Covid Restrictions are still in place.

Tel: **0116 305 3709**

email: meashamcomlibrary@gmail.com

www.meashamlibrary.btck.co.uk/

Opening hours:

Tuesday 10 – 5pm

Thursday 10 – 1pm

Friday 10 – 5pm

Saturday 10 – 1 pm

All welcome.

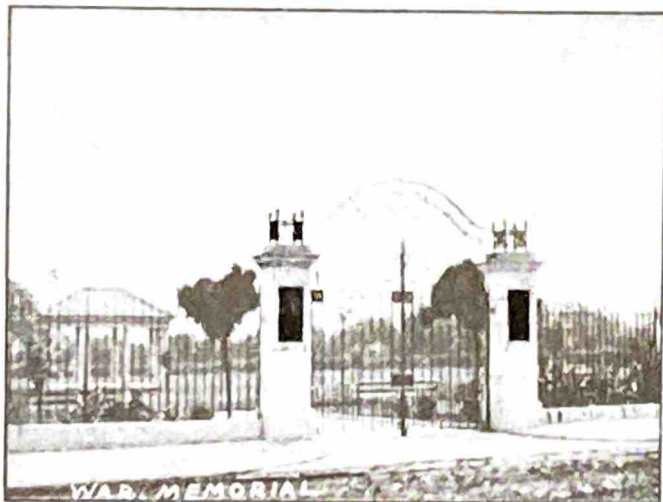


Donisthorpe Memorial Gardens

Despite the lack of a recent update for you, a lot of work has been going on with the project as detailed below. By the time you read this, we should have the final design ready to share with everyone. The main objective now is to involve more people and form a properly constituted group for planning the work and looking at ways of raising funding for it. We'd really like your help, so please drop me a line at the address at the end of this article if you would like to get involved.

Vegetation Clearance

A group of volunteers have cleared the bulk of the unwanted growth, particularly around the gates. A lot of the lower branches of the trees have also been removed to give a tidier and much more open aspect to the gardens. The debris was chipped with help from our park ranger Chris Conway (thanks Chris!) and used as mulch around the bases of the trees. There is still some work to be done but the area is now much improved.



Final Design

First of all a big thank you to everyone who took the time to give us feedback on the design proposals we have been showing at recent parish events. Your comments have been varied as we expected but also very supportive of the project so we are looking forward to more engagement from you all as we move into next year and the real hard work. Maddie Parker has done a great job analysing all your feedback and our architect is now drafting the final design based on those results. As soon as it is ready, we will present it to the Parish Council for their approval and then make it available for everyone to see.

Next Steps

Now that we have a design for the gardens we need to move onto the next stage which is starting the transformation itself. As we hope to involve lots of funding organisations and will be handling large sums of money, we need a properly constituted organisation to do this. We need your help to move the project on from here so please get involved with the group, without you we cannot bring the gardens back to life again. Look out for details of meetings in the near future.

If you would like to get involved, please contact me at wilde917@outlook.com

Jamie Wilde